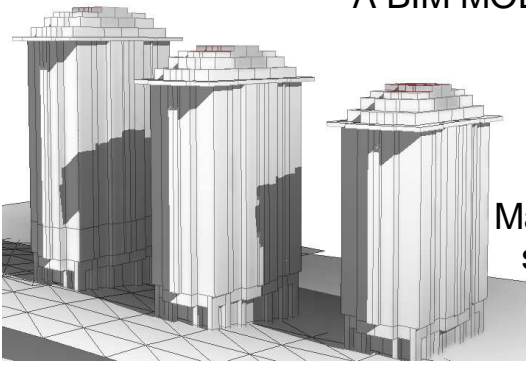
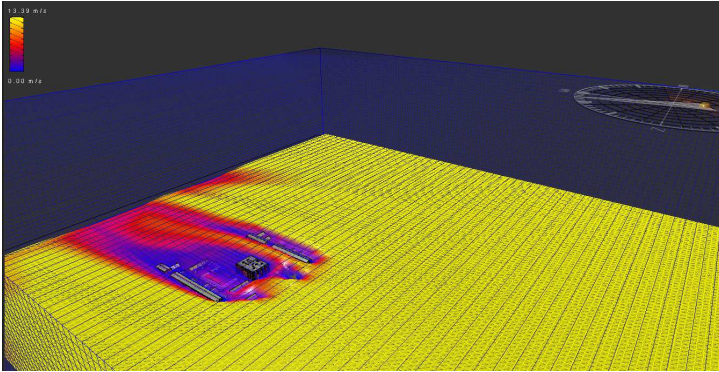


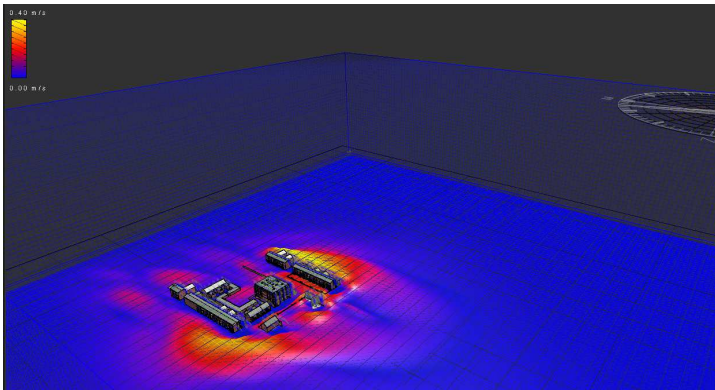
# EXAMPLES OF ANALYSIS AVAILABLE WHEN USING A BIM MODEL FOR EARLY CONCEPT DESIGN



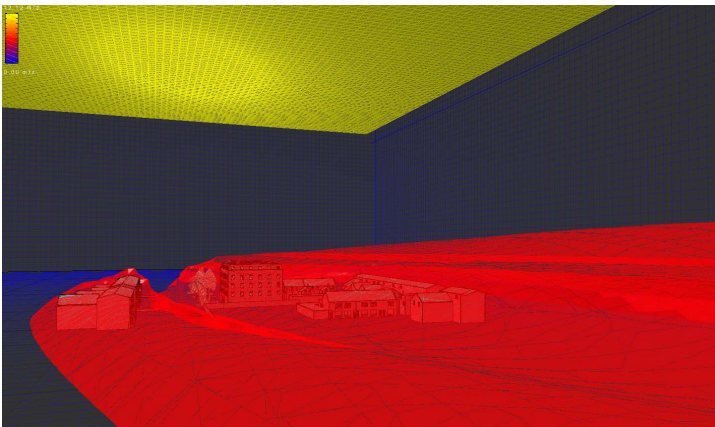
Massing model for early analysis, showing sun light falling on proposed structures



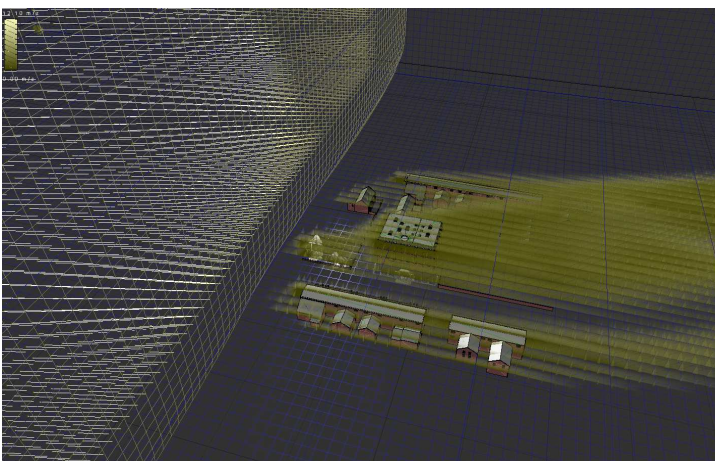
Wind Analysis carried out on proposed new structure with existing surrounding buildings. Weather data and position on earth information used to obtain worthwhile analysis.



Wind Analysis carried out on proposed new structure, with altered wind direction. Height of wind taken lower to show more of existing site conditions.



Analysis of the Wind Pressure on structures



Wind Velocity analysis diagram